



# WOODSHIRE WORD

>>> WOODSHIRE CIVIC CLUB'S NEWSLETTER <<<



## Your Voice and Your Dues Matter, 1, 2, 3!

# 1

PLEASE DO YOUR PART  
TOGETHER WE CAN REACH  
OUR PARTICIPATION  
GOAL OF 100%



Page 3, info on  
**DUES**



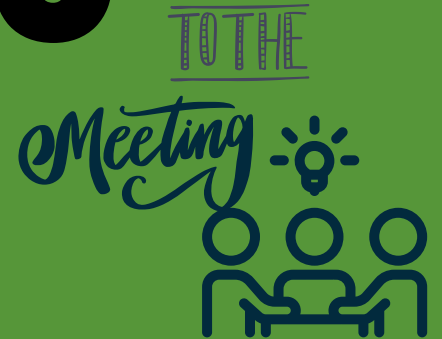
# 2



PAGE 5, INFO ON  
**Survey**

# 3

# GO!



Page 7, info on Next  
**MEETING**

As we enter a new season, your contributions and feedback are crucial. Please remember three key actions to strengthen our Woodshire community.

**#1.** Support paying civic club dues for a thriving community! Your ongoing contributions are vital for our organization's sustainability. They help fund essential resources like security patrols, mosquito spraying, beautification projects, and event support, fostering community growth and connection. If you haven't renewed your dues or want to contribute more, now is the perfect time. Every dollar counts, and we need all neighbors to help maintain these important programs. See the QR Code on page #3 to pay.

**#2.** We value your opinions and insights! To better understand your needs and expectations, we've created a short survey to gather your feedback. Your responses will guide our planning and ensure we continue to meet the needs of our community. The survey is anonymous if you choose, and will likely take just 10-15 minutes of your time. Please see the QR code above or go to <https://woodshirecivicclub.org/woodshire-neighborhood-survey> to complete the survey by July 14, 2025. See page #5 for more info.

**#3.** Attend our upcoming civic club community meeting on Wednesday July 16th @ 6:30 pm at St Luke's Presbyterian Church in their sanctuary room on 8915 Timberside Dr, Houston, TX 77025. This is a fantastic opportunity for you to engage with fellow members, learn about our latest initiatives, express your thoughts, and contribute to our future direction.

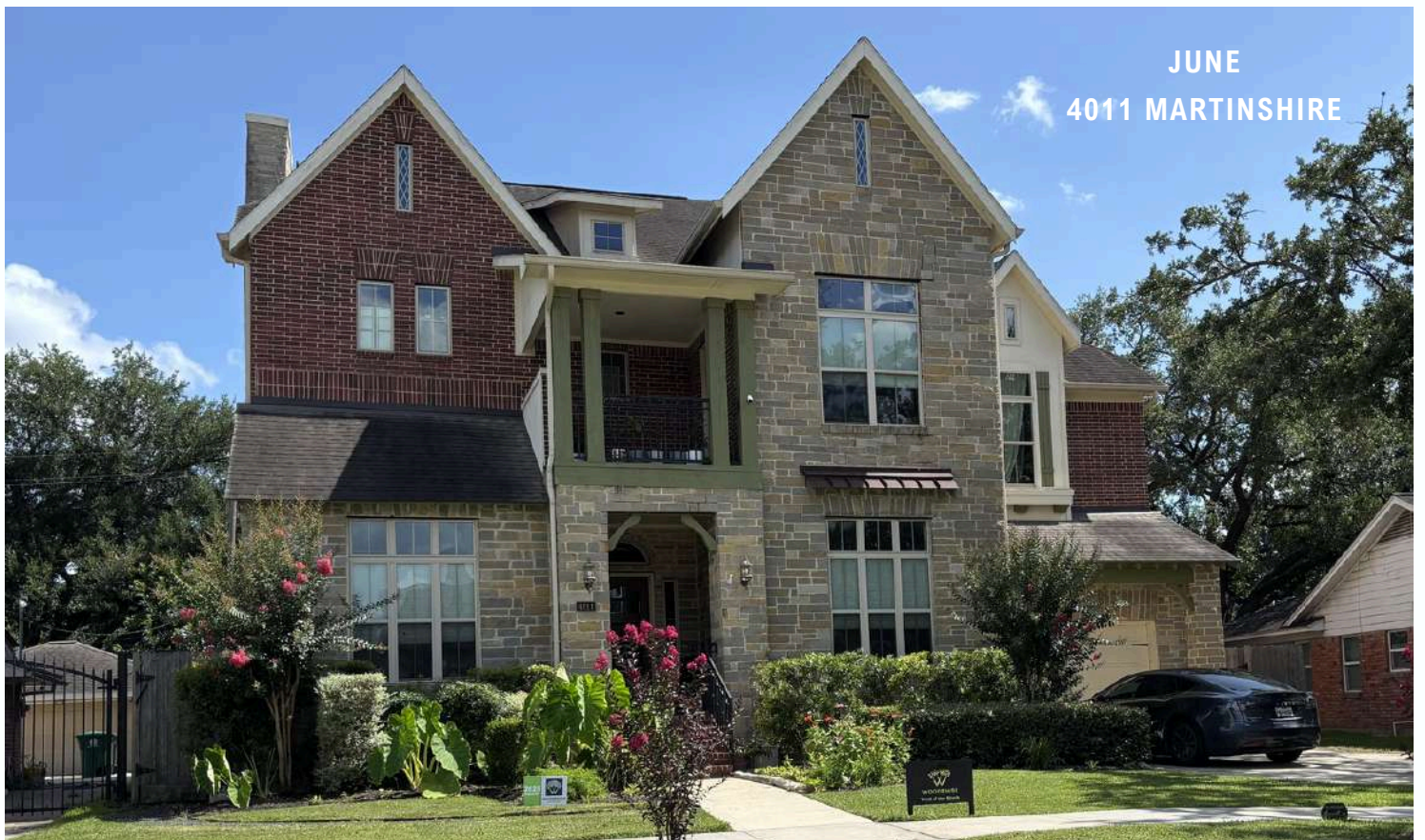
Your voice truly matters, and we want to hear from you!



YARDS OF



THE MONTH





# HOW, WHY & WHO PAYS OUR CIVIC CLUB DUES?

## ANNUAL CONTRIBUTION LEVELS

**\$200 - MEMBER**  
**\$300 - GOLD**  
**\$500 - PLATINUM**



## Pay Your 2025 Dues and Get a New Yard Sign

- Mail or drop off a check to 4125 Glenshire Houston TX, 77025
- Zelle to [woodshirecc@gmail.com](mailto:woodshirecc@gmail.com) (preferred method to avoid fees)
- Credit Card/PayPal:

<https://woodshirecivicclub.org/product/membership-dues-payment-options/>

## What Do Your Dues Cover?

- Security Cameras at neighborhood entrances
- GardaWorld Security Patrol for added safety
- Quarterly Woodshire Newsletter to keep everyone informed
- Regular Mosquito Spraying to keep pests at bay
- Beautification Projects like signage and landscape maintenance on the Stella Link medians
- Deed Restriction Governance to maintain property values
- Community Events like the Ice Cream Social and Neighborhood Night Out



**DUES PAID FOR 2025 - ONLY 54.8% OF WOODSHIRE RESIDENTS HAVE PAID SO FAR, LET'S RAISE THE PARTICIPATION RATE!**

**BASSOON 52%: 9022, 9102, 9106, 9118, 9122, 9126, 9130, 9134, 9218, 9222, 9302**

**BREAKWOOD 50%: 4103, 4106, 4110, 4111, 4114, 4119, 4122, 4126, 4127, 4134**

**FORDSHIRE 53%: 9101, 9105, 9109, 9113, 9125, 9203, 9207, 9211, 9307**

**GLENSHIRE 56%: 4002, 4006, 4009, 4013, 4018, 4021, 4022, 4025, 4029, 4106, 4110, 4117, 4118, 4125, 4126, 4129, 4130, 4133, 4137, 4142, 4145, 4146, 4154**

**LEESHIRE 65%: 4003, 4006, 4007, 4015, 4019, 4023, 4026, 4027, 4030, 4034, 4039, 4042, 4043, 4051, 4054, 4055, 4059, 4063, 4067, 4102, 4103, 4106, 4107, 4110, 4111, 4114, 4115, 4118, 4126, 4131, 4135, 4139**

**LEVONSHIRE 54%: 4002, 4003, 4007, 4011, 4014, 4015, 4023, 4026, 4031, 4038, 4039, 4042, 4043, 4111, 4114, 4115, 4118, 4119, 4122, 4126, 4138, 4139, 4142, 4147, 4151, 4154, 4159, 4162**

**MARTINSHIRE 51%: 4006, 4011, 4018, 4019, 4022, 4023, 4034, 4042, 4043, 4046, 4050, 4102, 4103, 4115, 4118, 4127, 4130, 4131, 4134, 4135, 4142, 4147, 4151**

**MISCHIRE 50%: 4006, 4010, 4011, 4014, 4015, 4026, 4027, 4031, 4038, 4042, 4046, 4047, 4050, 4051, 4102, 4107, 4110, 4111, 4114, 4127, 4130, 4135, 4139, 4142**

**NEWSHIRE 57%: 4002, 4006, 4017, 4022, 4025, 4026, 4030, 4033, 4042, 4045, 4048, 4049 LAKELAND: 9106**



## ASK A GARDENER: DO YOU NEED ADVICE ABOUT YOUR FLOWERS, GRASS, OR GARDEN?

**Dear Woodshire Gardener,**  
**It's the middle of summer. Is it too late to plant tomatoes?**



The Houston warm-growing season lasts into the fall. If you are just getting around to planting vegetables, there is still time for them to produce. Make sure to use transplants. Do not use seeds unless you start them inside.

**Dear Woodshire Gardener,**  
**There are so many beautiful Crepe Myrtles blooming right now. Can I plant a Crepe Myrtle or maybe a fruit tree right now?**

The temperatures are too high in the summer for a young tree to take root and flourish. Wait until the late fall, spring, or even winter to plant a tree. Remember the first year for a tree is critical. Be sure to water them regularly. Consider a tree bag if you are too busy to keep up.

**Send your questions to [info@woodshirecivicclub.org](mailto:info@woodshirecivicclub.org)**



# SECURITY UPDATE

## HURRICANE SEASON IS HERE. ARE YOU READY?



Please check the Woodshire website (<https://woodshirecivicclub.org/security/>) for some great tips to reducing the risk of you or your home becoming a victim of criminal activity. Good lighting, cameras, and staying in contact with your neighbors make your home less attractive for something to happen. If you get a lot deliveries to your house, invest in a large bin with a lid for packages to be out of sight.

We continue to have some incidents (stolen vehicles) and suspicious individuals. We stay in contact with police for non-emergency matters (713-884-3131) so they can track trends, including our new point of contact with HPD at our recent re-certification of our Citizen Patrollers (4 new members in Woodshire!).

If you would like to get involved, please reach out to Jon Le Grand at 832-596-8137.



- **Make an Emergency Plan:** Ensure all household members are informed.
- **Recognize Warnings and Alerts:** Use multiple sources, like the FEMA app, for updates.
- **Review Important Documents:** Keep insurance and personal documents updated and secure.
- **Strengthen Your Home:** Clear drains, secure outdoor items, and consider hurricane shutters.
- **Get Tech Ready:** Charge phones and have backup chargers handy.
- **Help Your Neighborhood:** Check on neighbors who may need assistance.
- **Gather Supplies:** Prepare a go-bag with essentials (medications, pet supplies).

For more info, visit [ready.gov](https://ready.gov) or [readyharris.org](https://readyharris.org)

# PLEASE TAKE THE SURVEY



Hello Woodshire!

The Woodshire Civic Club is exploring ways to better serve the neighborhood, including updates to deed restrictions and potentially converting to a HOA structure. Your feedback is vital in guiding next steps. We have created a survey accessible via the QR Code (or link) on this page to gather your feedback - please complete by July 14, 2025.

OR SEE

[HTTPS://WOODSHIRECIVICCLUB.ORG/WOODSHIRE-NEIGHBORHOOD-SURVEY](https://woodshirecivicclub.org/woodshire-neighborhood-survey)





# JOIN US FOR OUR ICE CREAM SOCIAL

6:30 PM

**Aug 1,  
2025**

4027 Mischire Dr.



## St. Luke's Presbyterian Church "Your Neighborhood Church"

**..Sundays at St. Luke's Presbyterian..**

Childcare, Church School for Youth and Adults	9:00 am
Worship Service	10:00 am
Refreshments and Fellowship	11:00am

Check out our website for special events and programs.  
<https://www.stlukespres.org/>

**God Loves You, No Exceptions!**

St. Luke's Presbyterian Church  
713.667.6531  
[www.stlukespres.org](http://www.stlukespres.org)  
8915 Timberside Dr.  
across from  
Longfellow Elementary



**COME SHOP OUR MERCH!**  
<https://woodshirecivicclub.org/shop/>



OUR PLATINUM MEMBERS:  
4134 BREAKWOOD, 4006 GLENSHIRE, 4025 GLENSHIRE,  
4110 GLENSHIRE, 4042 LEESHIRE, 4023 LEVONSHIRE,  
4031 MISCHIRE, 4111 MISCHIRE

OUR GOLD MEMBERS:  
9118 Bassoon, 4126 Breakwood, 9125 Fordshire, 4002 Glenshire, 4013 Glenshire, 4129 Glenshire, 4133 Glenshire,  
4145 Glenshire, 4154 Glenshire, 9106 Lakeland, 4015 Leeshire, 4026 Leeshire, 4034 Leeshire, 4051 Leeshire, 4106  
Leeshire, 4115 Leeshire, 4002 Levonshire, 4007 Levonshire, 4014 Levonshire, 4023 Levonshire, 4026 Levonshire, 4042  
Levonshire, 4043 Levonshire, 4111 Levonshire, 4159 Levonshire, 4162 Levonshire, 4006 Martinshire, 4011 Martinshire,  
4019 Martinshire, 4034 Martinshire, 4050 Martinshire, 4026 Mischire, 4027 Mischire, 4107 Mischire, 4135 Mischire,  
4002 Newshire, 4033 Newshire, 4049 Newshire

The Next

Meeting

TEMPORARY LOCATION

JULY16, 2025 6:30 PM

ST LUKE'S PRESBYTERIAN CHURCH

@ THE SANCTUARY ROOM

8915 TIMBERSIDE DR, HOUSTON, TX 77025

# MEETINGS, EVENTS & RECURRING DATES!

2025	MEETINGS/EVENTS	STELLA LINK SWEEP 2ND SAT @ 9AM	RECYCLE EVERY OTHER THURSDAY	TREE WASTE	HEAVY TRASH
JUL	WED JUL 16 6:30 PM WCC COMMUNITY MEETING St. Luke's Presbyterian Church	SAT JUL12	JUL 10 & 24	TUES JUL 15	-
AUG	FRI AUG 1 6:30PM ICE CREAM SOCIAL 4027 Mischire Dr.	SAT AUG 9	AUG 7 & 21	-	TUES AUG 19
SEPT		SAT SEP 13	SEP 4 & 18	TUES SEP 16	-
OCT	WED OCT 15 6:30 PM WCC community meeting Linkwood Community Center  NEIGHBORHOOD NIGHT OUT Date/Location TBD	SAT OCT 11	OCT 2, 16, & 30	-	TUES OCT 21
NOV	-	SAT NOV 8	NOV 13 & 27	TUES NOV 18	-
DEC	-	SAT DEC 13	DEC 11 & 26	-	TUES DEC 16



WOODSHIRE CIVIC CLUB'S NEWSLETTER

# WOODSHIRE WORD